



# Face Lock Advanced Series

## 3D Face Recognition

### Fast & Contactless Unlock Experience

3D stereoscopic vision algorithm, real-time and dynamic identification, effective and accurate recognition even makeup, glasses or wear hats;

Intelligent adaptive light adjustment chip build in, accurate recognition no matter day or night;

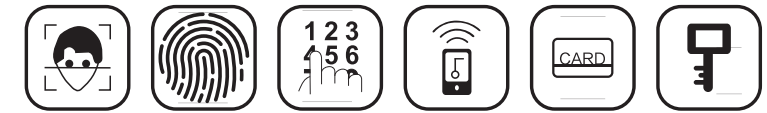


Ultra-wide angle, Wide-area recognition for height 1.2~2.2m.





K7



4.5" Touch Keypad \* 5.0" Indoor Screen \* Double Battery \* Double Camera \* Video Intercom

K7

## 3D Face Recognition Smart Lock

Face ID/Fingerprint/Password /Smart Card/Keys /Mobile APP	Screen:5" OLED
User Capacity: 100 Mixed	Battery: Rechargeable Li-Battery 4200mA*2
Finger Sensor: High Sensitive Capacitive	Verify Time: <0.1S
Password Length: 6~22 Digits	FAR: 0.0004%
Material: Aluminum + Tempered Glass	FRR: <0.15%
Surface Treatment: Baking Paint	Cylinder Grade: C
Color Optional: Space Gray	Door Thickness: 40~120mm
Dimension: 430*74*68mm	Working Temperature: -20~60°C
Net Weight: 6.0KGs	Working Humidity: 20%~90%



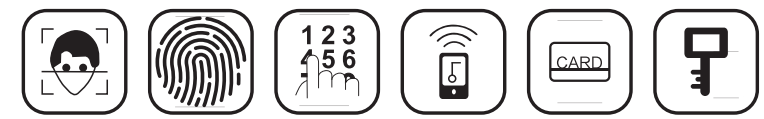


C1

### 3D Face Recognition Smart Lock

Face ID/Fingerprint/Password /Smart Card/Keys /Mobile APP	Screen:4.5” OLED
User Capacity: 100 Mixed	Battery: Rechargeable Li-Battery 4200mA
Finger Sensor: High Sensitive Capacitive	Verify Time: <0.1S
Password Length: 6~22 Digits	FAR: 0.0004%
Material: Aluminum + Tempered Glass	FRR: <0.15%
Surface Treatment: Anodizing	Cylinder Grade: C
Color Optional: Space Gray	Door Thickness: 40~120mm
Dimension: 430*74*60mm	Working Temperature: -20~60℃
Net Weight: 6.0KGs	Working Humidity: 20%~90%





Dual Camera \* 5” OLED screen \* Handle Optional

**X1**

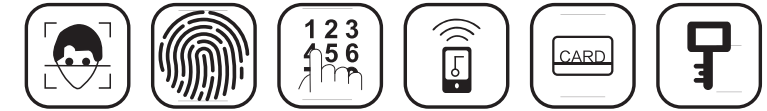
**3D Face Recognition Smart Lock**

Face ID/Fingerprint/Password /Smart Card/Keys /Mobile APP	Screen:5” OLED
User Capacity: 100 Mixed	Battery: Rechargeable Li-Battery 4200mA
Finger Sensor: High Sensitive Capacitive	Verify Time: <0.1S
Password Length: 6~22 Digits	FAR: 0.0004%
Material: Aluminum + Tempered Glass	FRR: <0.15%
Surface Treatment: Spray paint	Cylinder Grade: C
Color Optional: Space Gray	Door Thickness: 40~120mm
Dimension: 430*74*68mm	Working Temperature: -20~60℃
Net Weight: 6.0KGs	Working Humidity: 20%~90%





Mate8



## Mate8

### 3D Face Recognition Smart Lock

Face ID/Fingerprint/Password /Smart Card/Keys /Mobile APP	Screen:4.5" OLED
User Capacity: 100 Mixed	Battery: Rechargeable Li-Battery 4200mA
Finger Sensor: High Sensitive Capacitive	Verify Time: <0.1S
Password Length: 6~22 Digits	FAR: 0.0004%
Material: Aluminum + IML	FRR: <0.15%
Surface Treatment: Electroplating	Cylinder Grade: C
Color Optional: Space Gray	Door Thickness: 40~120mm
Dimension: 431*67*60mm	Working Temperature: -20~60°C
Net Weight: 4.0KGs	Working Humidity: 20%~90%





**F3**

## Face Recognition Smart Lock

Face ID/Fingerprint/Password /Smart Card/Keys /Mobile APP

User Capacity: 100 Mixed

Finger Sensor: High Sensitive Capacitive

Password Length: 6~22 Digits

Material: Aluminum + IML

Surface Treatment: Electroplating or Painting

Color Optional: Space Gray

Dimension: 427.5\*72\*49mm

Net Weight: 4.0KGs

Screen: 4.5" OLED

Battery: Rechargeable Li-Battery 4200mA

Verify Time: <0.1S

FAR: 0.0004%

FRR: <0.15%

Cylinder Grade: C

Door Thickness: 40~120mm

Working Temperature: -20~60°C

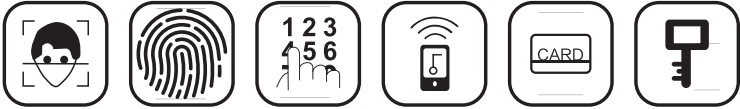
Working Humidity: 20%~90%







F6

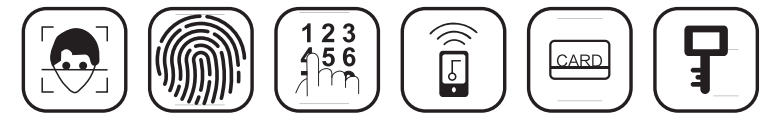


F6

3D Face Recognition Smart Lock

Face ID/Fingerprint/Password /Smart Card/Keys /Mobile APP	Screen:4.5” OLED
User Capacity: 100 Mixed	Battery: Rechargeable Li-Battery 4200mA
Finger Sensor: High Sensitive Capacitive	Verify Time: <0.1S
Password Length: 6~22 Digits	FAR: 0.0004%
Material: Aluminum + IML	FRR: <0.15%
Surface Treatment: Electroplating or Painting	Cylinder Grade: C
Color Optional: Space Gray	Door Thickness: 40~120mm
Dimension: 442*79*59mm	Working Temperature: -20~60°C
Net Weight: 4.4KGs	Working Humidity: 20%~90%





## F11

### 3D Face Recognition Smart Lock

Face ID/Fingerprint/Password /Smart Card/Keys /Mobile APP

User Capacity: 100 Mixed

Finger Sensor: High Sensitive Capacitive

Password Length: 6~22 Digits

Material: Aluminum + IML

Surface Treatment: Electroplating or Painting

Color Optional: Space Gray

Dimension: 449\*71\*60mm

Net Weight: 4.0KGs

Screen: 4.5" OLED

Battery: Rechargeable Li-Battery 4200mA

Verify Time: <0.1S

FAR: 0.0004%

FRR: <0.15%

Cylinder Grade: C

Door Thickness: 40~120mm

Working Temperature: -20~60°C

Working Humidity: 20%~90%

F11







C10

### 3D Face Recognition Smart Lock

Unlock Way: Face ID/Fingerprint/Password /Smart Card/Keys	Screen:4.5” OLED
User Capacity: 100 Mixed	Battery: Rechargeable Li-Battery 4200mA
Finger Sensor: Ofilm	Verify Time: <0.1S
Password Length: 6~22 digitals	FAR: 0.0004%
Material: Aluminum+Tempered Glass	FRR: <0.15%
Surface Treatment: Anodizing	Cylinder Grade: C
Color Optional: Space Gray	Door Thickness: 40~120mm
Dimension: 420*72*60mm	Working Temperature: -20~60℃
Net Weight: 6KGs	Working Humidity: 20%~90%



C20

### 3D Face Recognition Smart Lock

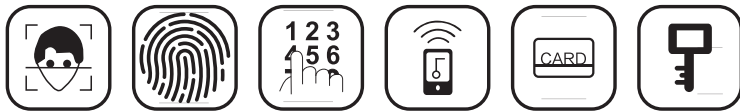
Face ID/Fingerprint/Password /Smart Card/Keys /Mobile APP	Screen:4.5” OLED
User Capacity: 100 Mixed	Battery: Rechargeable Li-Battery 4200mA
Finger Sensor: High Sensitive Capacitive	Verify Time: <0.1S
Password Length: 6~22 Digits	FAR: 0.0004%
Material: Aluminum + Tempered Glass	FRR: <0.15%
Surface Treatment: Anodizing	Cylinder Grade: C
Color Optional: Space Gray	Door Thickness: 40~120mm
Dimension: 420*72*60mm	Working Temperature: -20~60℃
Net Weight: 6.0KGs	Working Humidity: 20%~90%





3D Face Recognition Smart Lock

Unlock Way: Face ID/Fingerprint/Password /Smart Card/Keys	Screen:4.5” OLED
User Capacity: 100 Mixed	Battery: Rechargeable Li-Battery 4200mA*2
Finger Sensor: Ofilm	Verify Time: <0.1S
Password Length: 6~22 digitals	FAR: 0.0004%
Material: Aluminum+Tempered Glass	FRR: <0.15%
Surface Treatment: Anodizing	Cylinder Grade: C
Color Optional: Space Gray	Door Thickness: 40~120mm
Dimension: 430*74*60mm	Working Temperature: -20~60℃
Net Weight: 6KGs	Working Humidity: 20%~90%



3D Face Recognition Smart Lock

Face ID/Fingerprint/Password /Smart Card/Keys /Mobile APP	Screen:4.5” OLED
User Capacity: 100 Mixed	Battery: Rechargeable Li-Battery 4200mA
Finger Sensor: High Sensitive Capacitive	Verify Time: <0.1S
Password Length: 6~22 Digits	FAR: 0.0004%
Material: Aluminum + Tempered Glass	FRR: <0.15%
Surface Treatment: Anodizing	Cylinder Grade: C
Color Optional: Space Gray	Door Thickness: 40~120mm
Dimension: 430*74*60mm	Working Temperature: -20~60℃
Net Weight: 6.0KGs	Working Humidity: 20%~90%





## F7

### 3D Face Recognition Smart Lock

Unlock Way: Face ID/Fingerprint/Password /Smart Card/Keys	Screen:4.5" OLED
User Capacity: 100 Mixed	Battery: Rechargeable Li-Battery 4200mA
Finger Sensor: Ofilm	Verify Time: <0.1S
Password Length: 6~22 Digits	FAR: 0.0004%
Material: Aluminum+IML	FRR: <0.15%
Surface Treatment: Electroplating or Painting	Cylinder Grade: C
Color Optional: Space Gray	Door Thickness: 40~120mm
Dimension: 450*72*58mm	Working Temperature: -20~60°C
Net Weight: 5KGs	Working Humidity: 20%~90%

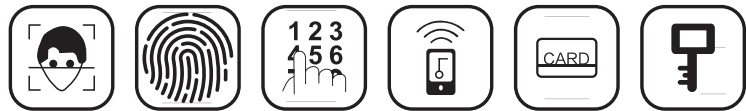


## F9

### 3D Face Recognition Smart Lock

Face ID/Fingerprint/Password /Smart Card/Keys /Mobile APP	Screen:4.5" OLED
User Capacity: 100 Mixed	Battery: Rechargeable Li-Battery 4200mA
Finger Sensor: High Sensitive Capacitive	Verify Time: <0.1S
Password Length: 6~22 Digits	FAR: 0.0004%
Material: Aluminum + IML	FRR: <0.15%
Surface Treatment: Electroplating or Painting	Cylinder Grade: C
Color Optional: Space Gray	Door Thickness: 40~120mm
Dimension: 450*70.6*63mm	Working Temperature: -20~60°C
Net Weight: 5.0KGs	Working Humidity: 20%~90%





## F16

### 3D Face Recognition Smart Lock

Unlock Way: Face ID/Fingerprint/Password /Smart Card/Keys	Screen:4.5” OLED
User Capacity: 100 Mixed	Battery: Rechargeable Li-Battery 4200mA
Finger Sensor: Ofilm	Verify Time: <0.1S
Password Length: 6~22 digitals	FAR: 0.0004%
Material: Aluminum+IML	FRR: <0.15%
Surface Treatment: Electroplating or Painting	Cylinder Grade: C
Color Optional: Space Gray	Door Thickness: 40~120mm
Dimension: 431*74*66mm	Working Temperature: -20~60°C
Net Weight: 4.4KGs	Working Humidity: 20%~90%



## F18

### 3D Face Recognition Smart Lock

Face ID/Fingerprint/Password /Smart Card/Keys /Mobile APP	Screen:4.5” OLED
User Capacity: 100 Mixed	Battery: Rechargeable Li-Battery 4200mA
Finger Sensor: High Sensitive Capacitive	Verify Time: <0.1S
Password Length: 6~22 Digits	FAR: 0.0004%
Material: Aluminum + IML	FRR: <0.15%
Surface Treatment: Electroplating or Painting	Cylinder Grade: C
Color Optional: Space Gray	Door Thickness: 40~120mm
Dimension: 424*69*61.5mm	Working Temperature: -20~60°C
Net Weight: 4.4KGs	Working Humidity: 20%~90%





## L10

### Waterproof Aluminum Door Smart Lock/TT Lock

<b>Fingerprint/Password /Smart Card/Keys /Mobile APP</b>	<b>Mortise Type: 2585/3585/4585</b>
<b>User Capacity: 300 Mixed</b>	<b>Battery: AA battery * 4PCS</b>
<b>Finger Sensor: High Sensitive Capacitive</b>	<b>Verify Time: &lt;0.5S</b>
<b>Password Length: 6~8 Digits</b>	<b>FAR: 0.0001%</b>
<b>Material: Zinc Alloy</b>	<b>FRR: &lt;0.1%</b>
<b>Surface Treatment: Electroplating or Painting + Tempered Glass</b>	<b>IP Rate: Ip65</b>
<b>Color Optional: Black</b>	<b>Door Thickness: 35~120mm</b>
<b>Dimension: 365*33*32mm</b>	<b>Working Temperature: -20~60°C</b>
<b>Net Weight: 2.0KGs</b>	<b>Working Humidity: 20%~90%</b>

L10

Waterproof IP65 \* Handle Optional \* Ultra Slim





IPX5 \* Handle Optional \* Ultra Slim

**L206**



**L206**

## Slim Aluminum Door Smart Lock

Fingerprint/Password /Smart Card/Keys /Mobile APP

User Capacity: Fingerprint 100

Card: 199

Password: 199

Finger Sensor: High Sensitive Capacitive

Password Length: 6~8 Digits

Material: Aluminum

Surface Treatment: Paint

Color Optional: Black/Silver

Dimension: 330\*37\*67mm

Net Weight: 1.5KGs

IP Rate: IPX5

Mortise Type: 2585/3585/4585

Battery: AA battery \* 4PCS

Verify Time: <0.1S

FAR: 0.0004%

FRR: <0.15%

Door Thickness: 40~120mm

Working Temperature: -20~60°C

Working Humidity: 20%~90%





**HY09**

## Door Viewer Semi-Auto Smart Lock

Fingerprint/Password /Smart Card/Keys /Mobile APP	Screen:4.5" OLED
User Capacity: 300 Mixed	Battery: AA Battery * 8PCS
Finger Sensor: Ofilm	Verify Time: <0.1S
Password Length: 6~10 Digits	FAR: 0.0004%
Material: Aluminum + Tempered Glass	FRR: <0.15%
Surface Treatment: Painting	Cylinder Grade: C
Color Optional: Space Gray	Door Thickness: 40~120mm
Dimension: 390*75*75mm	Working Temperature: -20~60°C
Net Weight: 2.2KGs	Working Humidity: 20%~90%



**HY03**

## Semi-Auto Smart Lock

Fingerprint/Password /Smart Card/Keys /Mobile APP	Screen:/
User Capacity: 200 Mixed	Battery: AA Battery* 4PCS
Finger Sensor: High Sensitive Capacitive	Verify Time: <0.1S
Password Length: 6~10 Digits	FAR: 0.0004%
Material: Aluminum	FRR: <0.15%
Surface Treatment: Painting	Cylinder Grade: C
Color Optional: Space Gray	Door Thickness: 40~120mm
Dimension: 380*72*74mm	Working Temperature: -20~60°C
Net Weight: 2.2KGs	Working Humidity: 20%~90%





## R1FP/R1PW

### Semi-Auto Smart Lock

<b>Fingerprint/Password /Smart Card/Keys /Mobile APP</b>	Screen:\
User Capacity: 300 Mixed	Battery: AA battery * 4PCS
Finger Sensor: Ofilm	Verify Time: <0.1S
Password Length: 6~10 digitals	FAR: 0.0004%
Material: Carbon Steel	FRR: <0.15%
Surface Treatment: Painting	Cylinder Grade: C
Color Optional: Space Gray	Door Thickness: 40~120mm
Dimension: 260*62*60mm	Working Temperature: -20~60℃
Net Weight: 1.8KGs	Working Humidity: 20%~90%



## R2FP/R2PW

### Semi-Auto Smart Lock/TT Lock

<b>Fingerprint/Password /Smart Card/Keys /Mobile APP</b>	Screen:\
<b>User Capacity: 300 Mixed</b>	<b>Battery: AA battery * 4PCS</b>
<b>Finger Sensor: High Sensitive Capacitive</b>	<b>Verify Time: &lt;0.1S</b>
<b>Password Length: 6~8 Digits</b>	<b>FAR: 0.0004%</b>
<b>Material: Aluminum</b>	<b>FRR: &lt;0.15%</b>
<b>Surface Treatment: Painting</b>	<b>Cylinder Grade: C</b>
<b>Color Optional: Black</b>	<b>Door Thickness: 40~120mm</b>
<b>Dimension: 265*65*65mm</b>	<b>Working Temperature: -20~60℃</b>
<b>Net Weight: 2.1KGs</b>	<b>Working Humidity: 20%~90%</b>





DM09

Smart Knob Lock/Tuya APP

<b>Fingerprint/Password /Smart Card/Keys /Mobile APP</b>	Mortise Type: Latch Included
User Capacity: 100 Mixed	Battery: AAA battery * 3PCS
Finger Sensor: Ofilm	Verify Time: <0.5S
Password Length: 6~10 digitals	FAR: 0.0004%
Material: Aluminum	FRR: <0.1%
Surface Treatment: Anodizin	Door Thickness: 35~70mm
Color Optional: Black	Working Temperature: -20~60℃
Dimension: Outdoor Ø57*72mm Indoor Ø33*50mm	Working Humidity: 20%~90%
Net Weight: 0.5KGs	

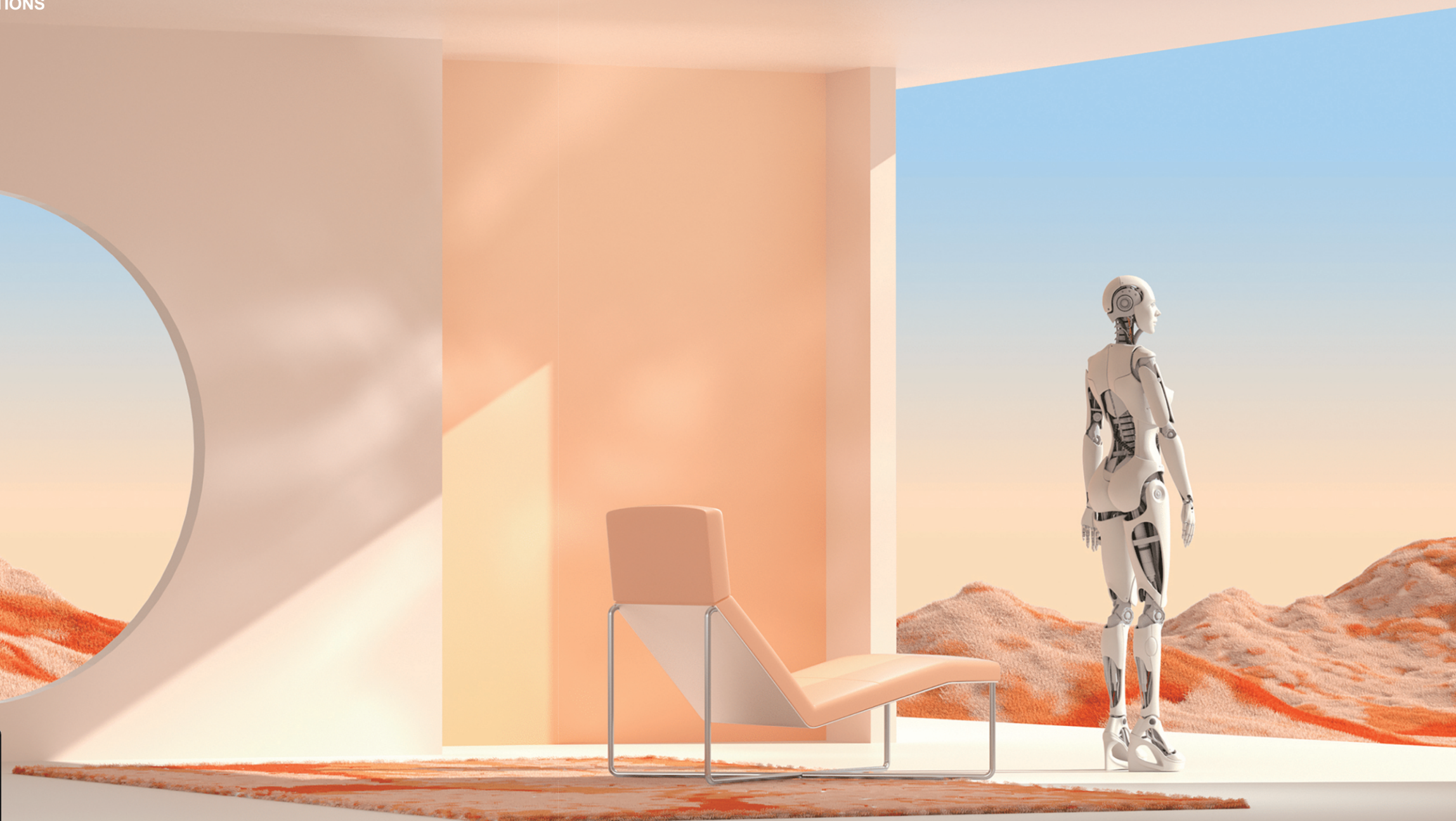


DM20FP/DM20PW

Smart Cylinder Lock

<b>Fingerprint/Password /Smart Card/Keys /Mobile APP</b>	<b>IP Rate: Ip54</b>
<b>User Capacity: 100 Mixed</b>	<b>Battery: CR123A battery * 1PC</b>
<b>Finger Sensor: High Sensitive Capacitive</b>	<b>Verify Time: &lt;0.5S</b>
<b>Password Length: 6~10 Digits</b>	<b>FAR: 0.0001%</b>
<b>Material: Aluminum</b>	<b>FRR: &lt;0.1%</b>
<b>Surface Treatment: Anodizing</b>	<b>Door Thickness: 70~90mm</b>
<b>Color Optional: Black</b>	<b>Working Temperature: -20~60℃</b>
<b>Dimension: Outdoor Ø40*50mm Indoor Ø30*35mm</b>	<b>Working Humidity: 20%~90%</b>
<b>Net Weight: 0.3KGs</b>	





Technology Benefits Mankind, Intelligence Leads The Future.